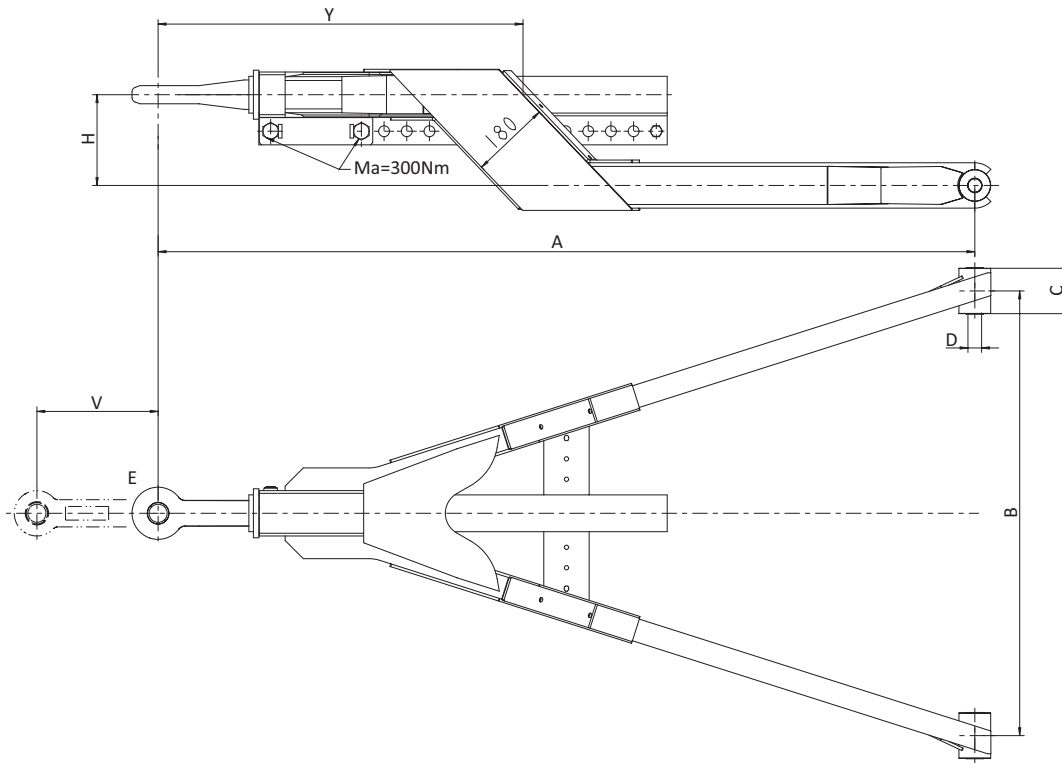
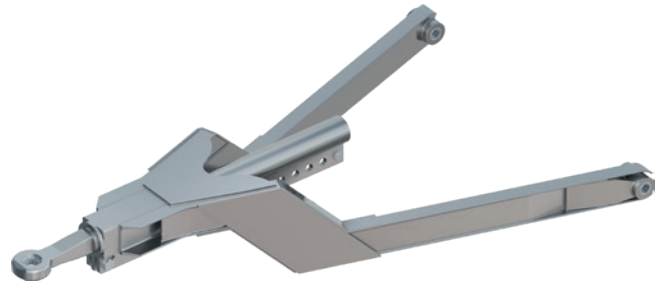


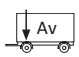
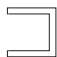


GZLG A

- DE** Zuggabel längenverstellbar, gekröpft
- EN** Drawbar extendable, cranked
- FR** Flèche de remorque réglable en longueur, coudées
- IT** Timone regolabile in lunghezza, piegata a gomito
- ES** Lanza-timón extensible, acodada



				D	ECE	Y	A	B	C	D	E	H max.	V	
		(t)	(t)	(kN)		(mm)	(mm)	(mm)	(mm)	(mm)		(mm)	(mm)	
YL	GZLG A	36	12	125	E1 55R-01 2685	820	1200	600-1400	70-100	24-50	1,3,4,5,6	150	8x50	U 100
YL	GZLG A	36	12	125	E1 55R-01 2685	820	1250-1450	600-1400	70-100	24-50	1,3,4,5,6	200	8x50	U 100
YL	GZLG A	36	12	125	E1 55R-01 2685	820	1500-2000	600-1400	70-100	24-50	1,3,4,5,6	250	8x50	U 100
YL	GZLG A	36	12	125	E1 55R-01 2685	920	2050-2550	600-1400	70-100	24-50	1,3,4,5,6	250	8x50	U 100
YL	GZLG A	36	12	125	E1 55R-01 2685	1010	2600-2800	600-1400	70-100	24-50	1,3,4,5,6	250	8x50	U 100
YL	GZLG A	36	12	125	E1 55R-01 2685	820	1200	600-1400	70-100	24-50	1,3,4,5,6	150	12x50	U 100
YL	GZLG A	36	12	125	E1 55R-01 2685	820	1250-1500	600-1400	70-100	24-50	1,3,4,5,6	200	12x50	U 100
YL	GZLG A	36	12	125	E1 55R-01 2685	820	1550-2000	600-1400	70-100	24-50	1,3,4,5,6	250	12x50	U 100
YL	GZLG A	36	12	125	E1 55R-01 2685	920	2050-2550	600-1400	70-100	24-50	1,3,4,5,6	250	12x50	U 100
YL	GZLG A	36	12	125	E1 55R-01 2685	1010	2600-2800	600-1400	70-100	24-50	1,3,4,5,6	250	12x50	U 100
YL	GZLG A	36	10	125	E1 55R-01 2685	820	1200-1300	600-1400	70-100	24-50	1,3,4,5,6	150	16x50*	U 100
YL	GZLG A	36	10	125	E1 55R-01 2685	820	1350-1450	600-1400	70-100	24-50	1,3,4,5,6	200	16x50	U 100
YL	GZLG A	36	12	125	E1 55R-01 2685	820	1500-1800	600-1400	70-100	24-50	1,3,4,5,6	200	16x50	U 100
YL	GZLG A	36	12	125	E1 55R-01 2685	820	1850-2000	600-1400	70-100	24-50	1,3,4,5,6	250	16x50	U 100
YL	GZLG A	36	12	125	E1 55R-01 2685	920	2050-2550	600-1400	70-100	24-50	1,3,4,5,6	250	16x50	U 100
YL	GZLG A	36	12	125	E1 55R-01 2685	1010	2600-2800	600-1400	70-100	24-50	1,3,4,5,6	250	16x50	U 100

* bis Grundlänge A < 1350 mm, Zugstangenüberstand nach hinten berücksichtigen • to basic length A < 1350 mm, note rear protrusion of towbar. • à la longueur de base A < 1350 mm, tenir compte de la résistance des barres de remorquage vers l'arrière. • alla lunghezza di base A < 1350 mm, tenere conto della prominente posteriore della barra di trazione. • a la longitud básica A < 1350 mm, tener en cuenta el saliente hacia atrás de la barra de tracción.