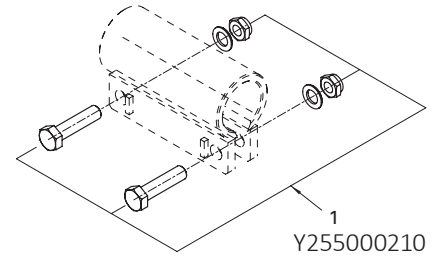
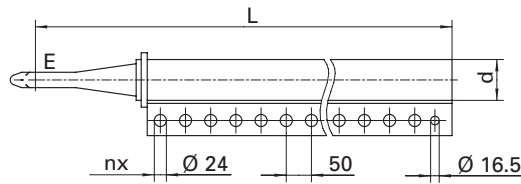
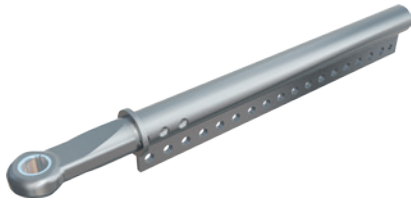
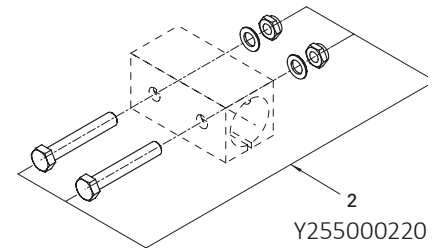
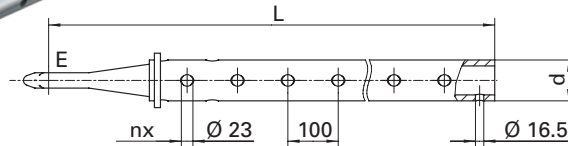


# GZL / GZLG



		V (mm)	nx	L (mm)	d (mm)	E (Zugöse • Drawbar eye • Anneaux de remorquage • Occhione di traino • Punta de lanza)
A	Y254000310	12x50	17	1120	81x11	40 DIN 74054 A (GZL 27= A ≥ 1350)
F	Y254000320	12x50	17	1120	81x19	40 DIN 74054 A (GZL 27= A < 1350; GZL 50 A; GZLG A)
D	Y254000408	12x50	17	1120	81x16	50 ECE
C/V	Y254000341	12x50	17	1120	81x19	40 CH (GZL 27; GZL 50 A; GZLG A)
S	Y254000409	12x50	17	1120	81x16	57 Skand.
J	Y254000381	12x50	17	1120	81x16	76 VG 74059 B (GZL 27; GZL 50 A)
Z	Y254000382	12x50	17	1120	81x19	68 BNA (GZL 27)
L	Y254000390	16x50	21	1320	81x19	40 DIN 74054 A (GZL 27; GZL 50 A; GZLG A)
N	Y254000417	16x50	21	1320	81x19	50 DIN 74053 A (GZL 50 B)
M	Y254000413	16x50	21	1320	81x16	50 ECE
P	Y254000393	16x50	21	1320	81x19	40 CH (GZL 27; GZL 50 A; GZLG A)
Q	Y254000412	16x50	21	1320	81x16	57 Skand.

# GZU / GZHU



		V (mm)	nx	L (mm)	d (mm)	E (Zugöse • Drawbar eye • Anneaux de remorquage • Occhione di traino • Punta de lanza)	
A	Y254000700	6x100	8	1075	81x11	40 DIN 74054 A	A > 1900
K	Y254000800	6x100	8	1075	81x19	40 DIN 74054 A	A ≤ 1900
C	Y254000720	6x100	8	1075	81x19	50 ECE	
D/R	Y254000860	6x100	8	1075	81x19	40 CH	
L	Y254000840	6x100	8	1075	81x19	57 Skand.	
Y	Y254000880	6x100	8	1075	81x19	76 VG 74059 B	
F	Y254000740	8x100	10	1275	81x19	40 DIN 74054 A	
H	Y254000760	8x100	10	1275	81x19	50 ECE	
I	Y254000780	8x100	10	1275	81x19	40 CH	
J	Y254000870	8x100	10	1275	81x19	57 Skand.	

Weitere Ausführungen auf Anfrage. • More models upon request. • Informations supplémentaires sur demande. • Altre versioni su richiesta. • Más modelos sobre pedido.