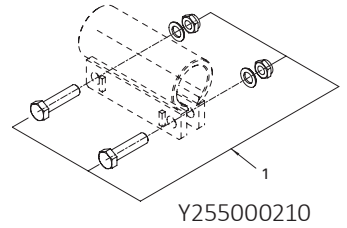
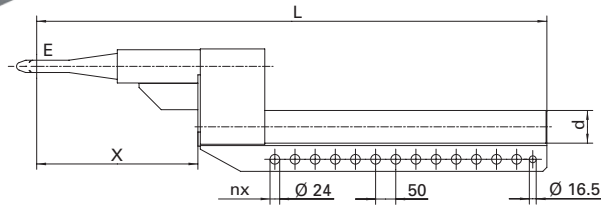
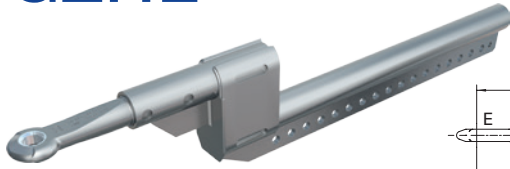
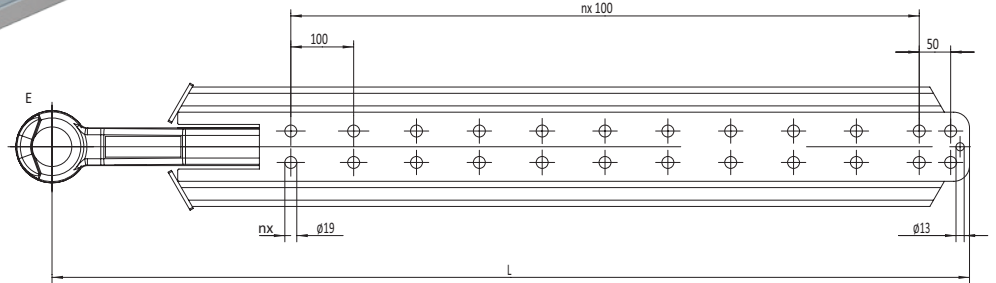
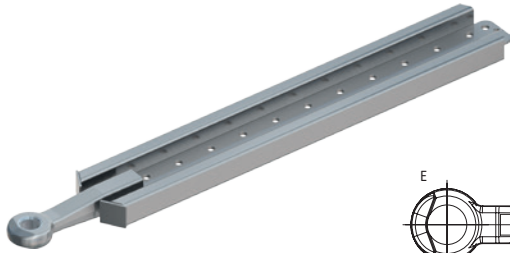


# GZHL



		V (mm)	nx	L (mm)	d (mm)	E (Zugöse • Drawbar eye • Anneaux de remorquage • Occhione di traino • Punta de lanza)	X	
B	Y254000405	8x50	13	1066	81x16	40 DIN 74054 A	200	A ≤ 1250
A	Y254000425	12x50	17	1266	81x16	40 DIN 74054 A	200	A ≤ 1250
H	Y254000445	12x50	17	1266	81x16	50 ECE	200	A ≤ 1250
I	Y254000475	12x50	17	1266	81x16	40 CH	200	A ≤ 1250
D	Y254000415	8x50	13	1266	81x16	40 DIN 74054 A	400	A > 1250
L	Y254000495	8x50	13	1266	81x16	50 ECE	400	A > 1250
N	Y254000485	8x50	13	1266	81x16	40 CH	400	A > 1250
C	Y254000435	12x50	17	1466	81x16	40 DIN 74054 A	400	A > 1250
F	Y254000465	12x50	17	1466	81x16	50 ECE	400	A > 1250
E	Y254000455	12x50	17	1466	81x16	40 CH	400	A > 1250

# GZV



		V (mm)	nx	L (mm)	E (Zugöse • Drawbar eye • Anneaux de remorquage • Occhione di traino • Punta de lanza)
B	Y002903901	10x50	8	1320	50 DIN 74053 A
	Y002903906	14x50	10	1520	
	Y002903911	20x50	13	1820	
L	Y002903904	10x50	8	1320	57 Skand.
	Y002903909	14x50	10	1520	
	Y002903914	20x50	13	1820	
F	Y002903800	10x50	8	1320	68 BNA
	Y002903801	14x50	10	1520	
	Y002903802	20x50	13	1820	