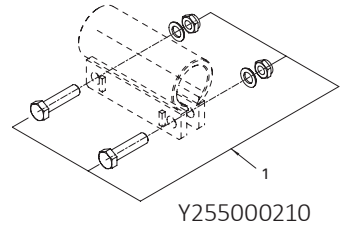
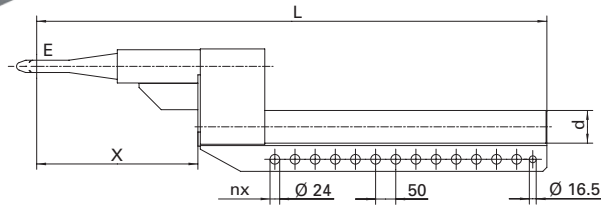
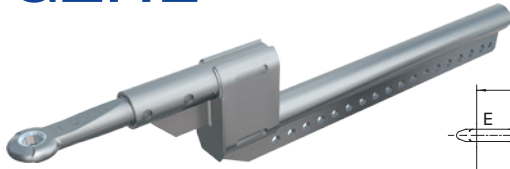
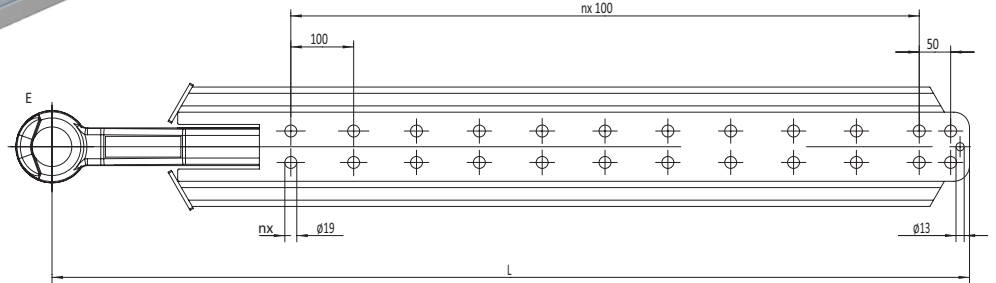


GZHL



| | | V (mm) | nx | L (mm) | d (mm) | E (Zugöse • Drawbar eye • Anneaux de remorquage • Occhione di traino • Punta de lanza) | X | |
|---|------------|-----------|----|-----------|-----------|---|-----|----------|
| B | Y254000405 | 8x50 | 13 | 1066 | 81x16 | 40 DIN 74054 A | 200 | A ≤ 1250 |
| A | Y254000425 | 12x50 | 17 | 1266 | 81x16 | 40 DIN 74054 A | 200 | A ≤ 1250 |
| H | Y254000445 | 12x50 | 17 | 1266 | 81x16 | 50 ECE | 200 | A ≤ 1250 |
| I | Y254000475 | 12x50 | 17 | 1266 | 81x16 | 40 CH | 200 | A ≤ 1250 |
| D | Y254000415 | 8x50 | 13 | 1266 | 81x16 | 40 DIN 74054 A | 400 | A > 1250 |
| L | Y254000495 | 8x50 | 13 | 1266 | 81x16 | 50 ECE | 400 | A > 1250 |
| N | Y254000485 | 8x50 | 13 | 1266 | 81x16 | 40 CH | 400 | A > 1250 |
| C | Y254000435 | 12x50 | 17 | 1466 | 81x16 | 40 DIN 74054 A | 400 | A > 1250 |
| F | Y254000465 | 12x50 | 17 | 1466 | 81x16 | 50 ECE | 400 | A > 1250 |
| E | Y254000455 | 12x50 | 17 | 1466 | 81x16 | 40 CH | 400 | A > 1250 |

GZV



| | | V (mm) | nx | L (mm) | E (Zugöse • Drawbar eye • Anneaux de remorquage • Occhione di traino • Punta de lanza) |
|---|------------|-----------|----|-----------|---|
| B | Y002903901 | 10x50 | 8 | 1320 | 50 DIN 74053 A |
| | Y002903906 | 14x50 | 10 | 1520 | |
| | Y002903911 | 20x50 | 13 | 1820 | |
| L | Y002903904 | 10x50 | 8 | 1320 | 57 Skand. |
| | Y002903909 | 14x50 | 10 | 1520 | |
| | Y002903914 | 20x50 | 13 | 1820 | |
| F | Y002903800 | 10x50 | 8 | 1320 | 68 BNA |
| | Y002903801 | 14x50 | 10 | 1520 | |
| | Y002903802 | 20x50 | 13 | 1820 | |